

BORDERTEC BR

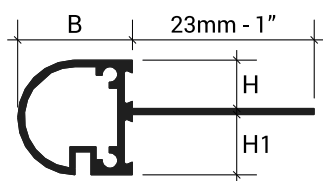
PRODUCT DESCRIPTION



Perimeter profile that finishes and protects the exposed concrete edge of balconies and terraces incorporating a symetrically shaped upper edging trim designed to frame the tiles surface. Particularly suitable for tiling on pre-existing floors. Includes an intergrsted "drip-lip". It is important to leave a space between elements for thermal expansion and covered by the covering cap.

TECHNICAL FEATURES

Length: 2.70 meters - 8'10"



Aluminum

B = 15/16" - 24 mm

H1 = 1/2" - 12.6 mm

MATERIAL DESCRIPTION

Aluminum

The primary aluminum alloy EN AW-6060 in T6 temper is suitable for complex extrusions, offering high strength and an excellent natural surface finish that lends itself well to subsequent finishing processes.

POWDER COATED ALUMINUM:

Powder coating begins with a chromium phosphate pre-treatment, followed by electrostatic application of polyester powders that offer high resistance to U.V. rays and atmospheric agents. The entire surface of the profile is coated with an average thickness of approximately 60 microns. A hot cross-linking polymerization process is then carried out to ensure maximum chemical and mechanical resistance.



A11



A22



A32



A62

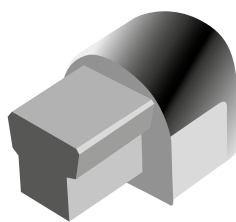


A63

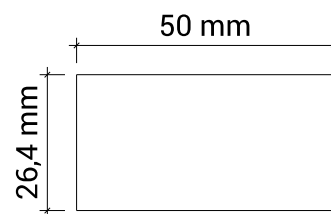
ACCESSORIES



BRG



BRE



bordertec >> BR in Powder Coated Aluminum		
Item	H inch	Finish
BR80A11270	5/16	A11 - Pure White
BR100A11270	3/8	A11 - Pure White
BR80A22270	5/16	A22 - Pastel Grey
BR100A22270	3/8	A22 - Pastel Grey
BR80A32270	5/16	A32 - Dark Beige
BR100A32270	3/8	A32 - Dark Beige
BR80A62270	5/16	A62 - Red Brown
BR100A62270	3/8	A62 - Red Brown
BR80A63270	5/16	A63 - Dark Brown
BR100A63270	3/8	A63 - Dark Brown

bordertec >> BRE External Junction in Powder Coated Aluminum		
Item	H inch	Finish
BRE80/100A11	5/16	A11 - Pure White
BRE80/100A22	5/16	A22 - Pastel Grey
BRE80/100A32	5/16	A32 - Dark Beige
BRE80/100A62	5/16	A62 - Red Brown
BRE80/100A63	5/16	A63 - Dark Brown

bordertec >> BRG Joint in Powder Coated Aluminum		
Item	H inch	Finish
BRG80/100A11	5/16	A11 - Pure White
BRG80/100A22	5/16	A22 - Pastel Grey
BRG80/100A32	5/16	A32 - Dark Beige
BRG80/100A62	5/16	A62 - Red Brown
BRG80/100A63	5/16	A63 - Dark Brown

APPLICATION

1. Choose the H-size profile corresponding to the thickness of the covering to be laid, taking care to ensure that the profile does not exceed the edge of the covering but is positioned 1/64" - 3/64" - 0.5 to 1 mm lower;
2. Cut to the desired length;
3. Fix the profiles to the screed with nails, taking care to separate them by at least 1 cm from the screed and taking care to leave at least 3/16" - 0.5 cm of space between adjacent profiles and mask that space with the joint;
4. Spread the adhesive in the profile application area with the help of a notched trowel;
5. Apply the desired waterproofing system (Balcotec System) where applicable;
6. Lay the flooring, taking care to leave a gap of approximately 3/16" - 5 mm between the tile and the profile;
7. Remove any adhesive residue from the profile immediately.

N.B.: Aluminum profiles offer limited resistance to alkaline substances, so their use must be evaluated according to the expected chemical aggressions. Aluminum profiles in contact with cementitious substances can be attacked by corrosion processes, so residues of used adhesives and sealants should be removed immediately. When laying, the right amount of adhesive must be used and the right drying times observed, avoiding creating cavities in which water can stagnate, which would lead to the formation of alkaline substances (aluminum hydroxide) and trigger corrosive electrolytic phenomena.

CLEANING AND MAINTENANCE

ALUMINIUM:

Aluminum requires no special maintenance.

For cleaning, use colorless alcohol diluted in water or neutral detergents, avoiding acidic ones (e.g., hydrochloric or hydrofluoric acid); use non-abrasive sponges or cloths to avoid damage. We recommend not applying cleaners directly to surfaces. After cleaning, rinse with water and dry immediately with a soft cloth. Avoid polishes. Quickly remove residual cement or grout to protect the surface.

Profilitec S.p.A.
Via Scotte, 3 - 36033 Isola Vicentina (Vicenza), ITALY
Tel: +39 0444 268311
e-mail: profilitec@profilitec.com

Profilitec Corp.
e-mail: customerservice@profilitec.com

Profilitec Ibérica, S.L.U.
e-mail: iberica@profilitec.com

Profilitec France
e-mail: france@profilitec.com

WARNINGS

These profiles must be handled with care, taking care to use cut-resistant gloves. The instructions and requirements contained herein, while based on our experience, are to be considered purely indicative and must be confirmed by exhaustive practical applications. Profilitec declines all responsibility for any damage to persons or property resulting from improper use of the product. The user is responsible for determining whether or not the product is suitable for use and assumes all responsibility for any damage resulting from incorrect installation of the material.

BILL OF QUANTITIES ITEM

Supply and installation of a profile in _____ (material), with a _____ finish (see Material Description section) with a characteristic measurement of _____ mm, equipped with a perforated fin that guarantees perfect grip with the adhesive used. Rounded profile with integrated drip edge.

Family type _____ from the Profilitec company as a painted aluminium perimeter profile suitable for overlaying existing terrace and balcony flooring, to be supplied and installed according to the rules of the art, respecting the methods and fields of application indicated by the manufacturer.

Profile length: 2700 mm

Profile SKU: _____

Material: _____ \$/pc

Installation: _____ \$/pc

Totale price: _____ \$/pc